

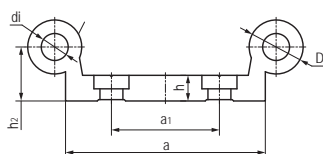
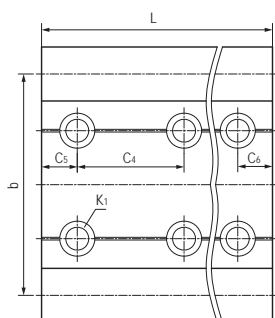
### WR02双圆直线导轨 Linear guides, double round rail



#### 产品特性 Product features

- 铝合金双圆导轨，硬质氧化表面
  - 配合LIN滑动膜抵抗污物
  - 重量轻和静音
  - 安装简单，免维护
  - 标准安装宽度
- Dual guide rails made of aluminum, Hard anodized surface
  - Resistance to dirt with LIN liners
  - Weight saving and no noise
  - Simple installation, maintenance-free
  - Standard fitting width

#### 标准规格 Standard specifications



产品编码 Part No.:

WR02-10-40-0000-NH

- 空白Blank: 带安装孔 With mounting holes
- NH: 无安装孔 No mounting holes
- 长度 Length
- 宽度 Width
- 直径 Diameter

产品编码 Part No.	D [mm]	di [mm]	h [mm]	h <sub>2</sub> [mm]	b [mm]	a <sub>0.5</sub> [mm]	a <sub>1</sub> [mm]	C <sub>4</sub> [mm]	C <sub>5</sub> =C <sub>6</sub> [mm]		K <sub>1</sub> [mm]	L max. [mm]	重量 Weight [kg/m]
									min.	max.			
WR02-10-40-0000	10	-	5.5	9	40	40	-	120	20	79.5	*M6	2500	1
WR02-10-80-0000	10	-	5.5	9	74	74	40	120	20	79.5	*M6	2500	1.5
WR02-16-60-0000	16	8	7.5	14	58	54	-	120	20	79.5	M8	2500	1.9
WR02-20-80-0000	20	10.2	9.5	20	82	74	40	120	20	79.5	M8	2500	3.3

\*M6: 通孔 Plain holes

\*\*WR02-10-40/WR02-16-60为单排安装孔 a single row of mounting holes

产品编码 Part No.	D [mm]	di [mm]	h [mm]	h <sub>2</sub> [mm]	b [mm]	a <sub>0.5</sub> [mm]	a <sub>1</sub> [mm]	C <sub>4</sub> [mm]	C <sub>5</sub> =C <sub>6</sub> [mm]		K <sub>1</sub> [mm]	L max. [mm]	重量 Weight [kg/m]
									min.	max.			
WR02-10-40-0000-NH	10	-	5.5	9	40	40	-	-	-	-	-	2500	1
WR02-10-80-0000-NH	10	-	5.5	9	74	74	-	-	-	-	-	2500	1.5
WR02-16-60-0000-NH	16	8	7.5	14	58	54	-	-	-	-	-	2500	1.9
WR02-20-80-0000-NH	20	10.2	9.5	20	82	74	-	-	-	-	-	2500	3.3

WR02

CSB-LMS®

www.csb-ep.com  
sales@csb-ep.com

Tel: 0086 573 84186133/84185527  
Fax: 0086 573 84185517